



Predictive and Preventive Maintenance of Overhead Crane over the Radio

2020-01

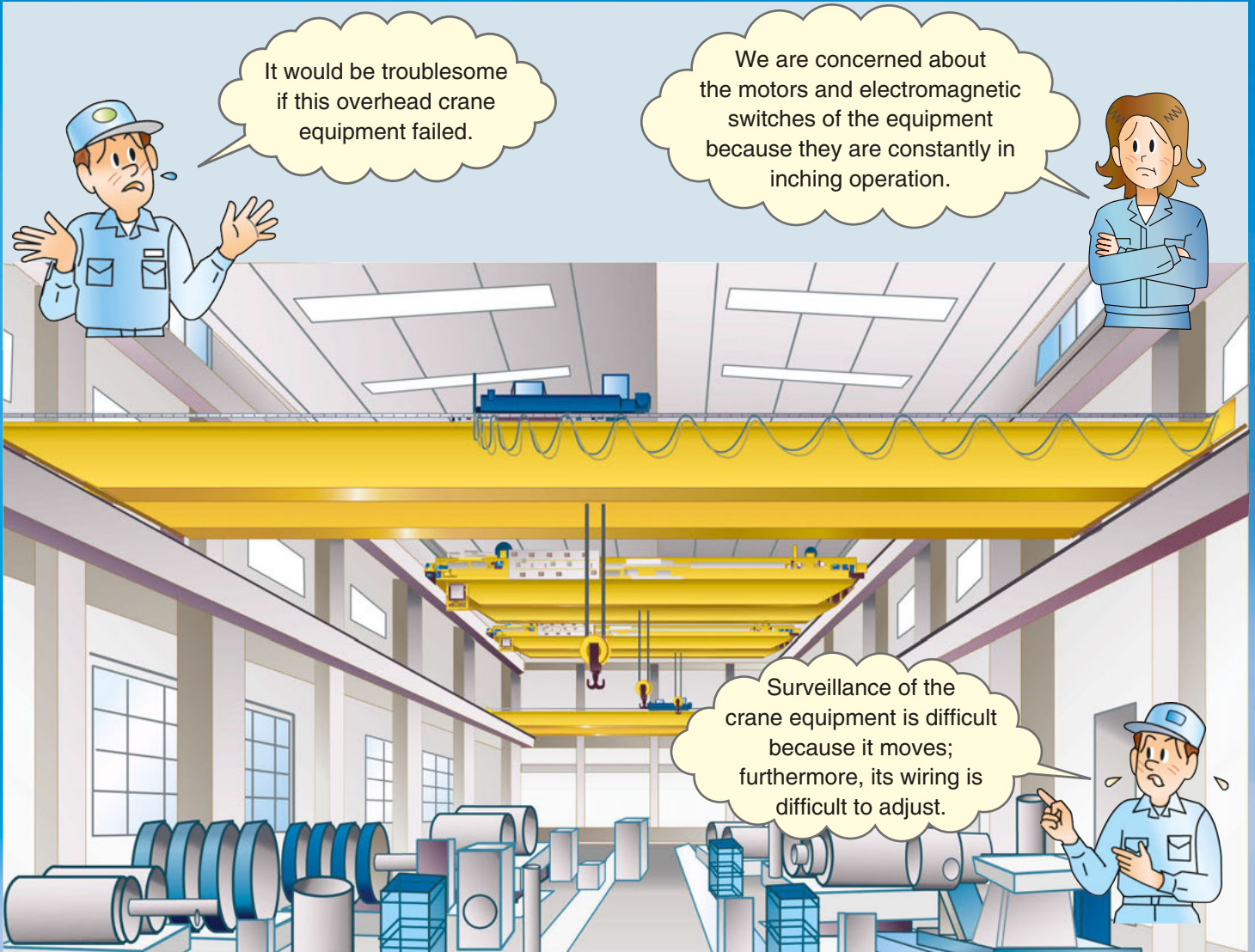
EC-Z673

500577

4-5002

Rev. 0

01



Predictive and Preventive Maintenance

You can conduct predictive and preventive maintenance of existing crane equipment by simply retrofitting sensors.



No Wiring Work

It is possible to retrofit sensors wirelessly, with no wiring work required.

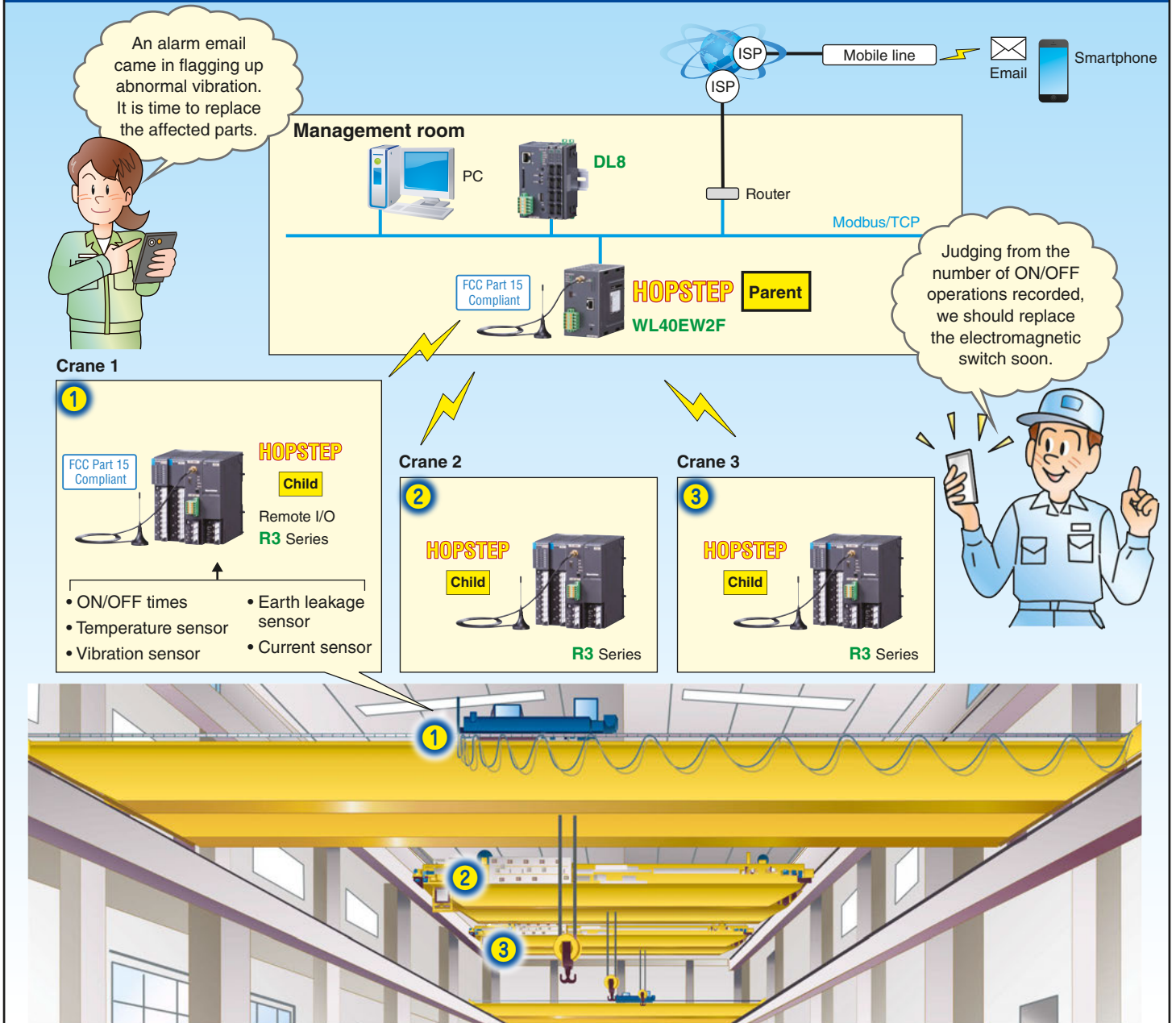


Possible to Obtain Measurement Signals

You can take the measurements necessary for predictive and preventive maintenance.



Example of Predictive and Preventive Maintenance System with HOPSTEP (900 MHz ISM Band Multi-hop Wireless System)



Web Data Logger DL8 Series

Web-Enabled Remote Terminal Unit for Monitoring, Event Reporting and Data Logging

Model: DL8



FCC Part 15 Compliant 900 MHz ISM Band Wireless Products (*)

- Free communication charges and no license fees.
- Reaching a long line-of-sight distance, up to 0.62 mile (1 km).(*)
- Excellent wave propagation characteristics



HOPSTEP Parent
Wireless Gateway
Model: WL40EW2F



HOPSTEP Child
Remote I/O R3 Series
Modbus Interface Module
Model: R3-NM1F

(*) Be sure to conduct a signal strength site survey before introducing wireless modules.
(**) This device is approved for use only in the US.

M-SYSTEM
M-SYSTEM CO., LTD.

URL www.m-system.com
E-mail info@m-system.co.jp

5-2-55, Minamitsumori, Nishinari-ku, Osaka 557-0063 JAPAN
Tel: +81(6)6659-8201 Fax: +81(6)6659-8510

Your local representative: