

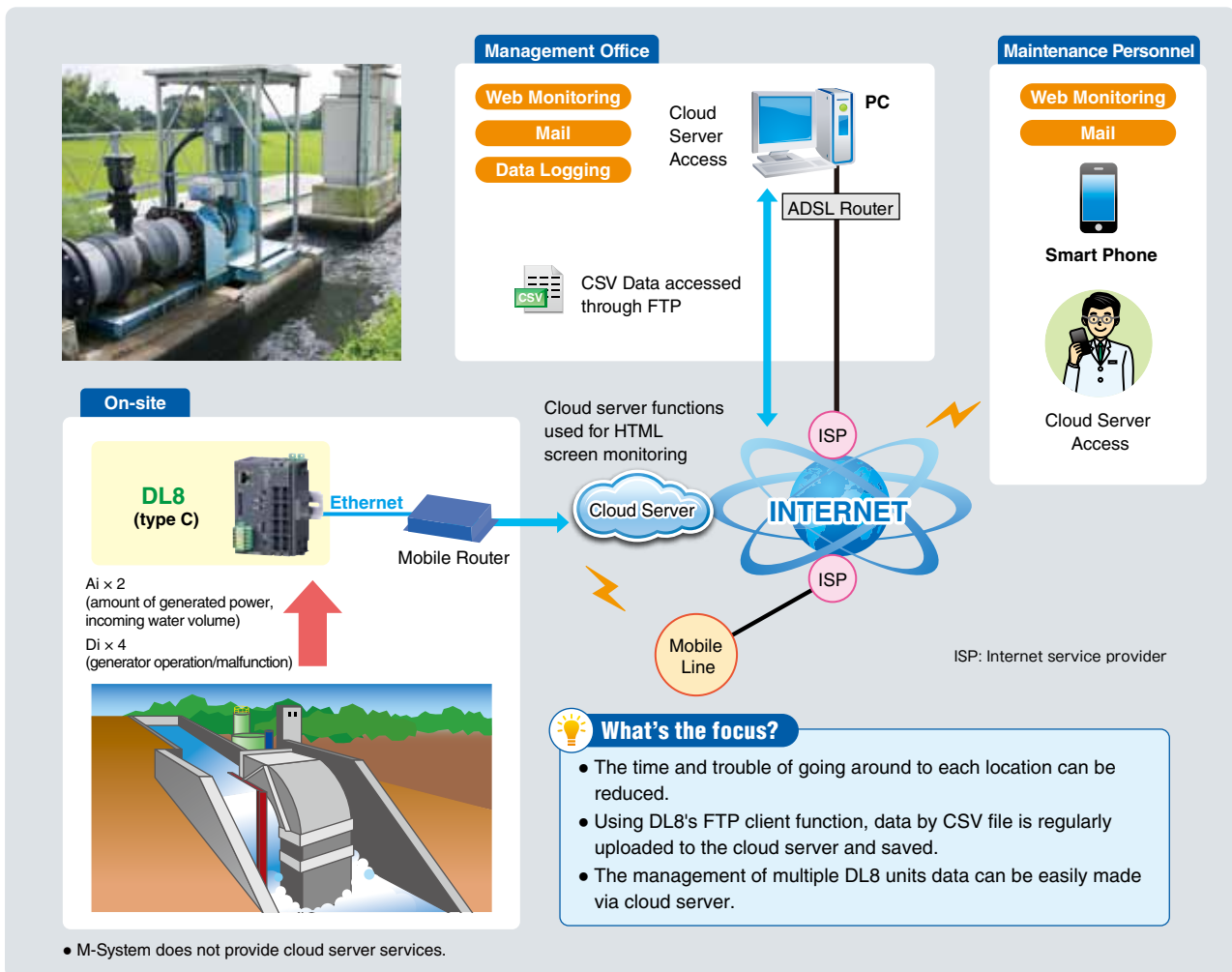


## MICRO HYDRO POWER GENERATOR

**Applicable Area :** Hydro power generator

**Application :** Remote monitoring of micro hydro power generator

- Micro hydro power generation is the type of power generator that uses kinetic energy generated by height gaps in man-made channels (i.e., agricultural wastewater) or small-sized rivers. Install DL8 to the generator system.
- Input signals to the DL8 include the pulse signal for the generated power, measurement signals such as incoming water volume to the feed-water inlet.
- The input signals can be viewed on the screen as the trend graph of power and incoming water volume via cloud server over Internet connected to the PC in the management office.
- In the event of generator malfunction, the contact signal of the abnormality is input to the DL8, and e-mail notification is sent to a PC in the management office and a mobile phone of maintenance personnel.



• Web browsed views are images that are subject to change without notice. • In order to effect the applications on this page, static IP or dynamic DNS is required.  
 • M-System Company does not provide smart phones and/or telecommunication services.